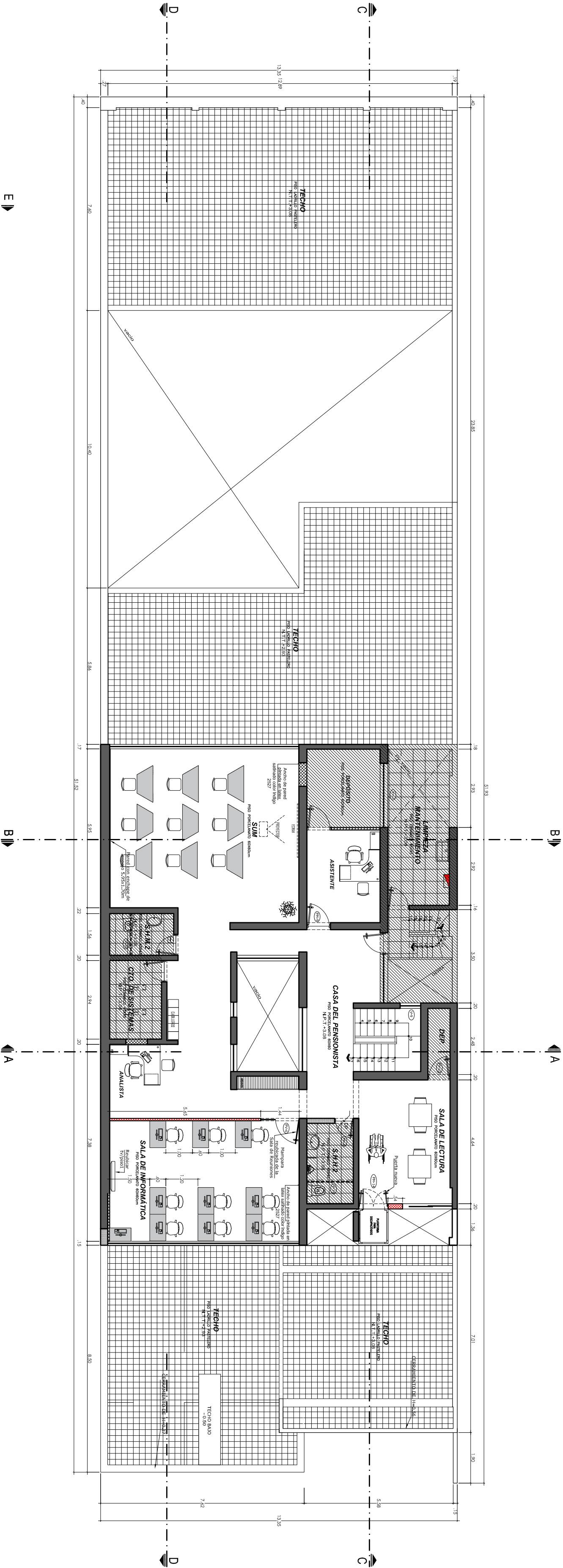


| CUADRO DE VANOS | | | | |
|-----------------|-------|------|--------|-------|
| TIPO | ANCHO | ALTO | A.L.F. | CANT. |
| Pu-7 | 3.00 | 2.20 | - | 1 |
| Pu-8 | 3.00 | 2.20 | - | 1 |
| Pu-9 | 3.00 | 2.20 | - | 1 |
| Pu-10 | 3.00 | 2.20 | - | 1 |
| Pu-11 | 3.00 | 2.20 | - | 1 |
| Pu-12 | 3.00 | 2.20 | - | 1 |
| Pu-13 | 3.00 | 2.20 | - | 1 |
| Pu-14 | 3.00 | 2.20 | - | 1 |
| Pu-15 | 3.00 | 2.20 | - | 1 |
| Pu-16 | 3.00 | 2.20 | - | 1 |
| Pu-17 | 3.00 | 2.20 | - | 1 |
| Pu-18 | 3.00 | 2.20 | - | 1 |
| Pu-19 | 3.00 | 2.20 | - | 1 |
| Pu-20 | 3.00 | 2.20 | - | 1 |
| Pu-21 | 3.00 | 2.20 | - | 1 |
| Pu-22 | 3.00 | 2.20 | - | 1 |
| Pu-23 | 3.00 | 2.20 | - | 1 |
| Pu-24 | 3.00 | 2.20 | - | 1 |
| Pu-25 | 3.00 | 2.20 | - | 1 |
| Pu-26 | 3.00 | 2.20 | - | 1 |
| Pu-27 | 3.00 | 2.20 | - | 1 |
| Pu-28 | 3.00 | 2.20 | - | 1 |
| Pu-29 | 3.00 | 2.20 | - | 1 |
| Pu-30 | 3.00 | 2.20 | - | 1 |
| Pu-31 | 3.00 | 2.20 | - | 1 |
| Pu-32 | 3.00 | 2.20 | - | 1 |
| Pu-33 | 3.00 | 2.20 | - | 1 |
| Pu-34 | 3.00 | 2.20 | - | 1 |
| Pu-35 | 3.00 | 2.20 | - | 1 |
| Pu-36 | 3.00 | 2.20 | - | 1 |
| Pu-37 | 3.00 | 2.20 | - | 1 |
| Pu-38 | 3.00 | 2.20 | - | 1 |
| Pu-39 | 3.00 | 2.20 | - | 1 |
| Pu-40 | 3.00 | 2.20 | - | 1 |
| Pu-41 | 3.00 | 2.20 | - | 1 |
| Pu-42 | 3.00 | 2.20 | - | 1 |
| Pu-43 | 3.00 | 2.20 | - | 1 |
| Pu-44 | 3.00 | 2.20 | - | 1 |
| Pu-45 | 3.00 | 2.20 | - | 1 |
| Pu-46 | 3.00 | 2.20 | - | 1 |
| Pu-47 | 3.00 | 2.20 | - | 1 |
| Pu-48 | 3.00 | 2.20 | - | 1 |
| Pu-49 | 3.00 | 2.20 | - | 1 |
| Pu-50 | 3.00 | 2.20 | - | 1 |
| Pu-51 | 3.00 | 2.20 | - | 1 |
| Pu-52 | 3.00 | 2.20 | - | 1 |
| Pu-53 | 3.00 | 2.20 | - | 1 |
| Pu-54 | 3.00 | 2.20 | - | 1 |
| Pu-55 | 3.00 | 2.20 | - | 1 |
| Pu-56 | 3.00 | 2.20 | - | 1 |
| Pu-57 | 3.00 | 2.20 | - | 1 |
| Pu-58 | 3.00 | 2.20 | - | 1 |
| Pu-59 | 3.00 | 2.20 | - | 1 |
| Pu-60 | 3.00 | 2.20 | - | 1 |
| Pu-61 | 3.00 | 2.20 | - | 1 |
| Pu-62 | 3.00 | 2.20 | - | 1 |
| Pu-63 | 3.00 | 2.20 | - | 1 |
| Pu-64 | 3.00 | 2.20 | - | 1 |
| Pu-65 | 3.00 | 2.20 | - | 1 |
| Pu-66 | 3.00 | 2.20 | - | 1 |
| Pu-67 | 3.00 | 2.20 | - | 1 |
| Pu-68 | 3.00 | 2.20 | - | 1 |
| Pu-69 | 3.00 | 2.20 | - | 1 |
| Pu-70 | 3.00 | 2.20 | - | 1 |
| Pu-71 | 3.00 | 2.20 | - | 1 |
| Pu-72 | 3.00 | 2.20 | - | 1 |
| Pu-73 | 3.00 | 2.20 | - | 1 |
| Pu-74 | 3.00 | 2.20 | - | 1 |
| Pu-75 | 3.00 | 2.20 | - | 1 |
| Pu-76 | 3.00 | 2.20 | - | 1 |
| Pu-77 | 3.00 | 2.20 | - | 1 |
| Pu-78 | 3.00 | 2.20 | - | 1 |
| Pu-79 | 3.00 | 2.20 | - | 1 |
| Pu-80 | 3.00 | 2.20 | - | 1 |
| Pu-81 | 3.00 | 2.20 | - | 1 |
| Pu-82 | 3.00 | 2.20 | - | 1 |
| Pu-83 | 3.00 | 2.20 | - | 1 |
| Pu-84 | 3.00 | 2.20 | - | 1 |
| Pu-85 | 3.00 | 2.20 | - | 1 |
| Pu-86 | 3.00 | 2.20 | - | 1 |
| Pu-87 | 3.00 | 2.20 | - | 1 |
| Pu-88 | 3.00 | 2.20 | - | 1 |
| Pu-89 | 3.00 | 2.20 | - | 1 |
| Pu-90 | 3.00 | 2.20 | - | 1 |
| Pu-91 | 3.00 | 2.20 | - | 1 |
| Pu-92 | 3.00 | 2.20 | - | 1 |
| Pu-93 | 3.00 | 2.20 | - | 1 |
| Pu-94 | 3.00 | 2.20 | - | 1 |
| Pu-95 | 3.00 | 2.20 | - | 1 |
| Pu-96 | 3.00 | 2.20 | - | 1 |
| Pu-97 | 3.00 | 2.20 | - | 1 |
| Pu-98 | 3.00 | 2.20 | - | 1 |
| Pu-99 | 3.00 | 2.20 | - | 1 |
| Pu-100 | 3.00 | 2.20 | - | 1 |

| MAMPARAS EXISTENTES REUBICADAS | | | | |
|--------------------------------|-------|------|--------|-------|
| TIPO | ANCHO | ALTO | A.L.F. | CANT. |
| Pu-1 | 3.00 | 2.20 | - | 1 |
| Pu-2 | 3.00 | 2.20 | - | 1 |
| Pu-3 | 3.00 | 2.20 | - | 1 |
| Pu-4 | 3.00 | 2.20 | - | 1 |
| Pu-5 | 3.00 | 2.20 | - | 1 |
| Pu-6 | 3.00 | 2.20 | - | 1 |
| Pu-7 | 3.00 | 2.20 | - | 1 |
| Pu-8 | 3.00 | 2.20 | - | 1 |
| Pu-9 | 3.00 | 2.20 | - | 1 |
| Pu-10 | 3.00 | 2.20 | - | 1 |
| Pu-11 | 3.00 | 2.20 | - | 1 |
| Pu-12 | 3.00 | 2.20 | - | 1 |
| Pu-13 | 3.00 | 2.20 | - | 1 |
| Pu-14 | 3.00 | 2.20 | - | 1 |
| Pu-15 | 3.00 | 2.20 | - | 1 |
| Pu-16 | 3.00 | 2.20 | - | 1 |
| Pu-17 | 3.00 | 2.20 | - | 1 |
| Pu-18 | 3.00 | 2.20 | - | 1 |
| Pu-19 | 3.00 | 2.20 | - | 1 |
| Pu-20 | 3.00 | 2.20 | - | 1 |
| Pu-21 | 3.00 | 2.20 | - | 1 |
| Pu-22 | 3.00 | 2.20 | - | 1 |
| Pu-23 | 3.00 | 2.20 | - | 1 |
| Pu-24 | 3.00 | 2.20 | - | 1 |
| Pu-25 | 3.00 | 2.20 | - | 1 |
| Pu-26 | 3.00 | 2.20 | - | 1 |
| Pu-27 | 3.00 | 2.20 | - | 1 |
| Pu-28 | 3.00 | 2.20 | - | 1 |
| Pu-29 | 3.00 | 2.20 | - | 1 |
| Pu-30 | 3.00 | 2.20 | - | 1 |
| Pu-31 | 3.00 | 2.20 | - | 1 |
| Pu-32 | 3.00 | 2.20 | - | 1 |
| Pu-33 | 3.00 | 2.20 | - | 1 |
| Pu-34 | 3.00 | 2.20 | - | 1 |
| Pu-35 | 3.00 | 2.20 | - | 1 |
| Pu-36 | 3.00 | 2.20 | - | 1 |
| Pu-37 | 3.00 | 2.20 | - | 1 |
| Pu-38 | 3.00 | 2.20 | - | 1 |
| Pu-39 | 3.00 | 2.20 | - | 1 |
| Pu-40 | 3.00 | 2.20 | - | 1 |
| Pu-41 | 3.00 | 2.20 | - | 1 |
| Pu-42 | 3.00 | 2.20 | - | 1 |
| Pu-43 | 3.00 | 2.20 | - | 1 |
| Pu-44 | 3.00 | 2.20 | - | 1 |
| Pu-45 | 3.00 | 2.20 | - | 1 |
| Pu-46 | 3.00 | 2.20 | - | 1 |
| Pu-47 | 3.00 | 2.20 | - | 1 |
| Pu-48 | 3.00 | 2.20 | - | 1 |
| Pu-49 | 3.00 | 2.20 | - | 1 |
| Pu-50 | 3.00 | 2.20 | - | 1 |
| Pu-51 | 3.00 | 2.20 | - | 1 |
| Pu-52 | 3.00 | 2.20 | - | 1 |
| Pu-53 | 3.00 | 2.20 | - | 1 |
| Pu-54 | 3.00 | 2.20 | - | 1 |
| Pu-55 | 3.00 | 2.20 | - | 1 |
| Pu-56 | 3.00 | 2.20 | - | 1 |
| Pu-57 | 3.00 | 2.20 | - | 1 |
| Pu-58 | 3.00 | 2.20 | - | 1 |
| Pu-59 | 3.00 | 2.20 | - | 1 |
| Pu-60 | 3.00 | 2.20 | - | 1 |
| Pu-61 | 3.00 | 2.20 | - | 1 |
| Pu-62 | 3.00 | 2.20 | - | 1 |
| Pu-63 | 3.00 | 2.20 | - | 1 |
| Pu-64 | 3.00 | 2.20 | - | 1 |
| Pu-65 | 3.00 | 2.20 | - | 1 |
| Pu-66 | 3.00 | 2.20 | - | 1 |
| Pu-67 | 3.00 | 2.20 | - | 1 |
| Pu-68 | 3.00 | 2.20 | - | 1 |
| Pu-69 | 3.00 | 2.20 | - | 1 |
| Pu-70 | 3.00 | 2.20 | - | 1 |
| Pu-71 | 3.00 | 2.20 | - | 1 |
| Pu-72 | 3.00 | 2.20 | - | 1 |
| Pu-73 | 3.00 | 2.20 | - | 1 |
| Pu-74 | 3.00 | 2.20 | - | 1 |
| Pu-75 | 3.00 | 2.20 | - | 1 |
| Pu-76 | 3.00 | 2.20 | - | 1 |
| Pu-77 | 3.00 | 2.20 | - | 1 |
| Pu-78 | 3.00 | 2.20 | - | 1 |
| Pu-79 | 3.00 | 2.20 | - | 1 |
| Pu-80 | 3.00 | 2.20 | - | 1 |
| Pu-81 | 3.00 | 2.20 | - | 1 |
| Pu-82 | 3.00 | 2.20 | - | 1 |
| Pu-83 | 3.00 | 2.20 | - | 1 |
| Pu-84 | 3.00 | 2.20 | - | 1 |
| Pu-85 | 3.00 | 2.20 | - | 1 |
| Pu-86 | 3.00 | 2.20 | - | 1 |
| Pu-87 | 3.00 | 2.20 | - | 1 |
| Pu-88 | 3.00 | 2.20 | - | 1 |
| Pu-89 | 3.00 | 2.20 | - | 1 |
| Pu-90 | 3.00 | 2.20 | - | 1 |
| Pu-91 | 3.00 | 2.20 | - | 1 |
| Pu-92 | 3.00 | 2.20 | - | 1 |
| Pu-93 | 3.00 | 2.20 | - | 1 |
| Pu-94 | 3.00 | 2.20 | - | 1 |
| Pu-95 | 3.00 | 2.20 | - | 1 |
| Pu-96 | 3.00 | 2.20 | - | 1 |
| Pu-97 | 3.00 | 2.20 | - | 1 |
| Pu-98 | 3.00 | 2.20 | - | 1 |
| Pu-99 | 3.00 | 2.20 | - | 1 |
| Pu-100 | 3.00 | 2.20 | - | 1 |

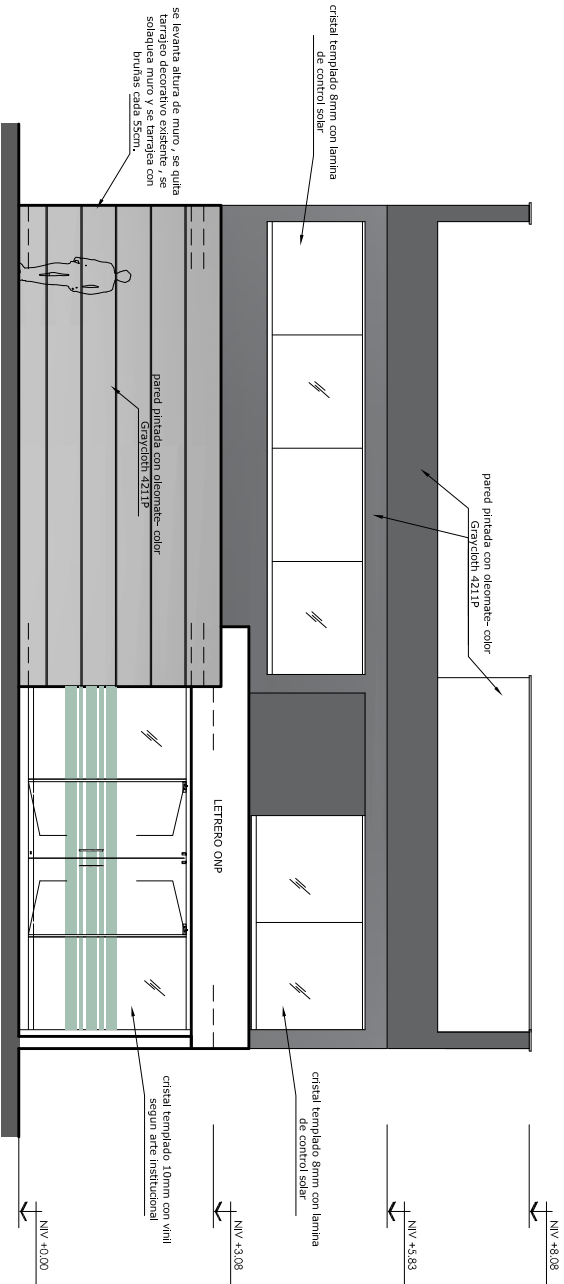
PLANTA PISO 1 - C.A. ICA
ESC 1:75

AV. CONDE DE NIEVA

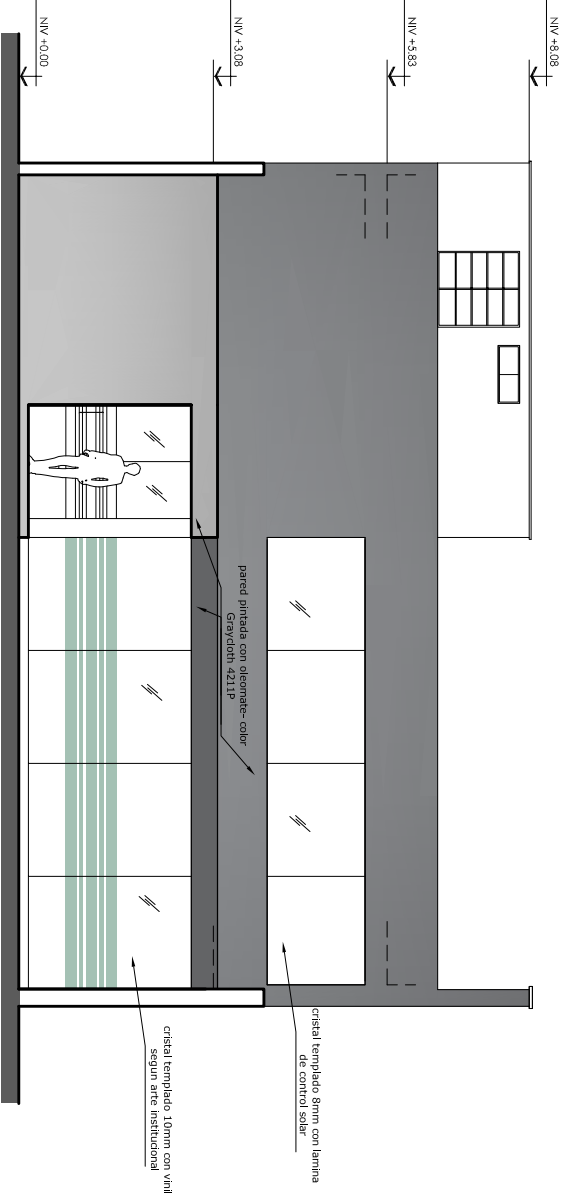


PLANTA PISO 2 - C.A. ICA

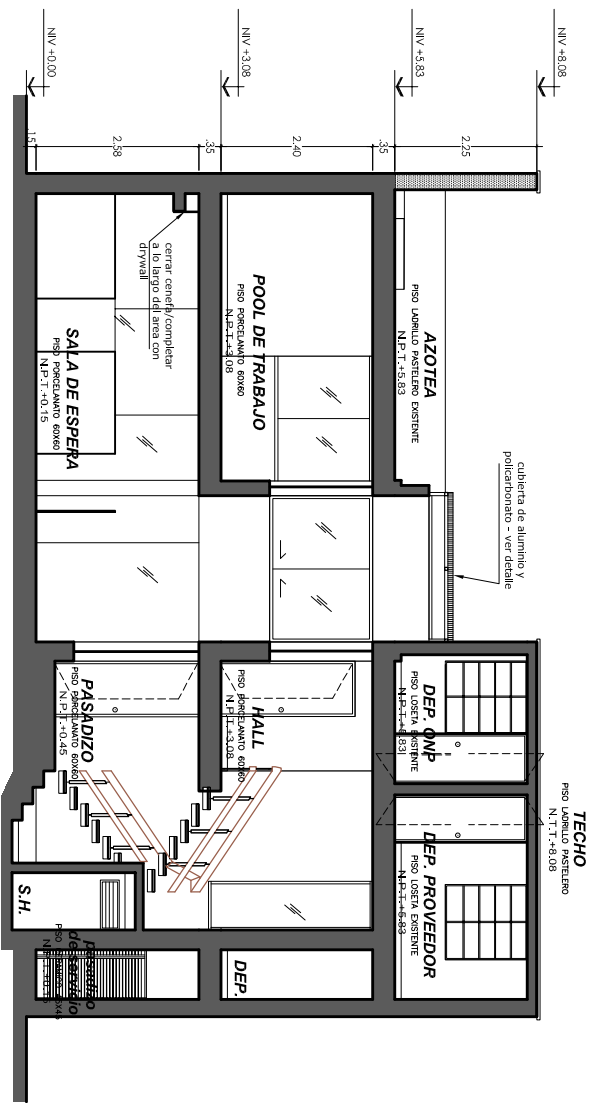
| | | | | | | |
|----------------|--|----------|---|---|------------|---------|
| Observaciones: | | Entidad: | Proyecto: | Plano: | Escala: | Límite: |
| Item 1 | ANTEPROYECTO 18/8 | | REAPERTURA DEL CENTRO DE ATENCION ICA | PLANTA CON MOBILIARIO | 1/75 | |
| Item 2 | 1ra modificación suscrita 21-Agosto / 1ra entrega modificación 21-Agosto | | AL COMITÉ DE ASESORIA TECNICA DEL DISTRITO DE ICA, PROVINCIA DE ICA, D.E. ICA | Proyectado: ARO. RUTH E. JAUREGUI ALARCON | Fecha: | A-07 |
| Item 3 | 2da modificación suscrita 21-Agosto / 1ra entrega modificación 21-Agosto | Item 5 | Item 6 | Decreto No. 171-2020 | Fecha: | |
| Item 4 | 3ra modificación suscrita 31-Agosto / 1ra entrega modificación 31-Agosto | Item 7 | Item 8 | R.L.A. | ENERO 2020 | |



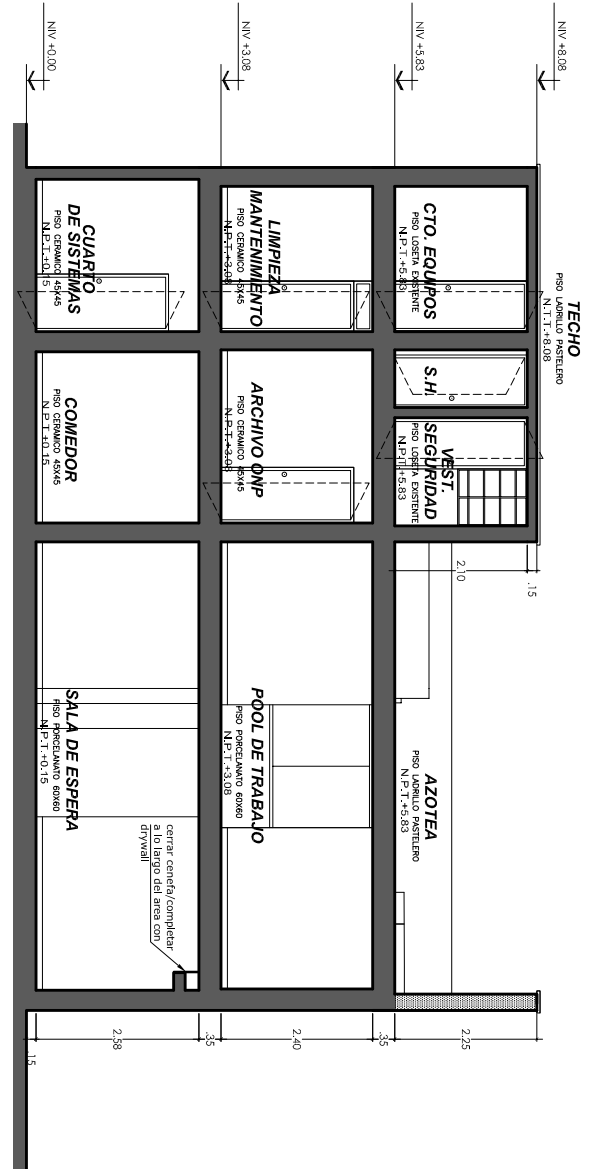
ELEVACION PRINCIPAL
ESC 1:75



ELEVACION POSTERIOR
ESC 1:75

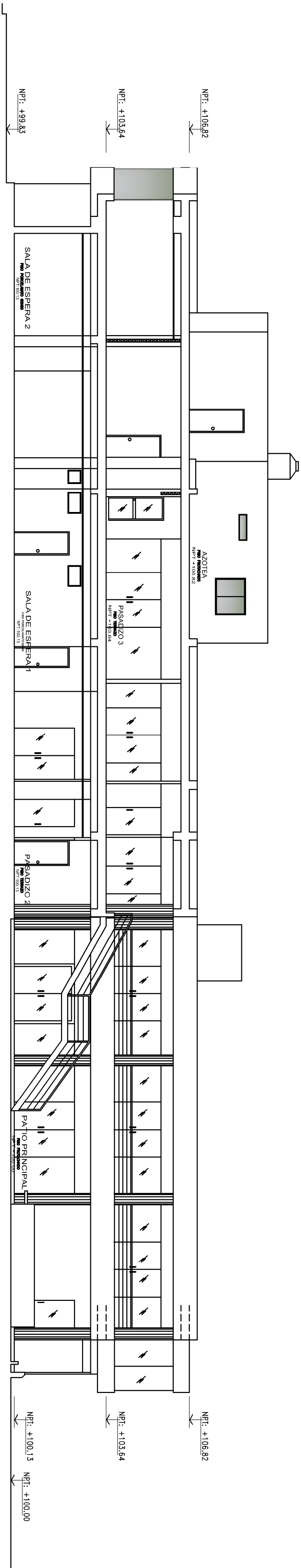


CORTE A-A
ESC 1:75

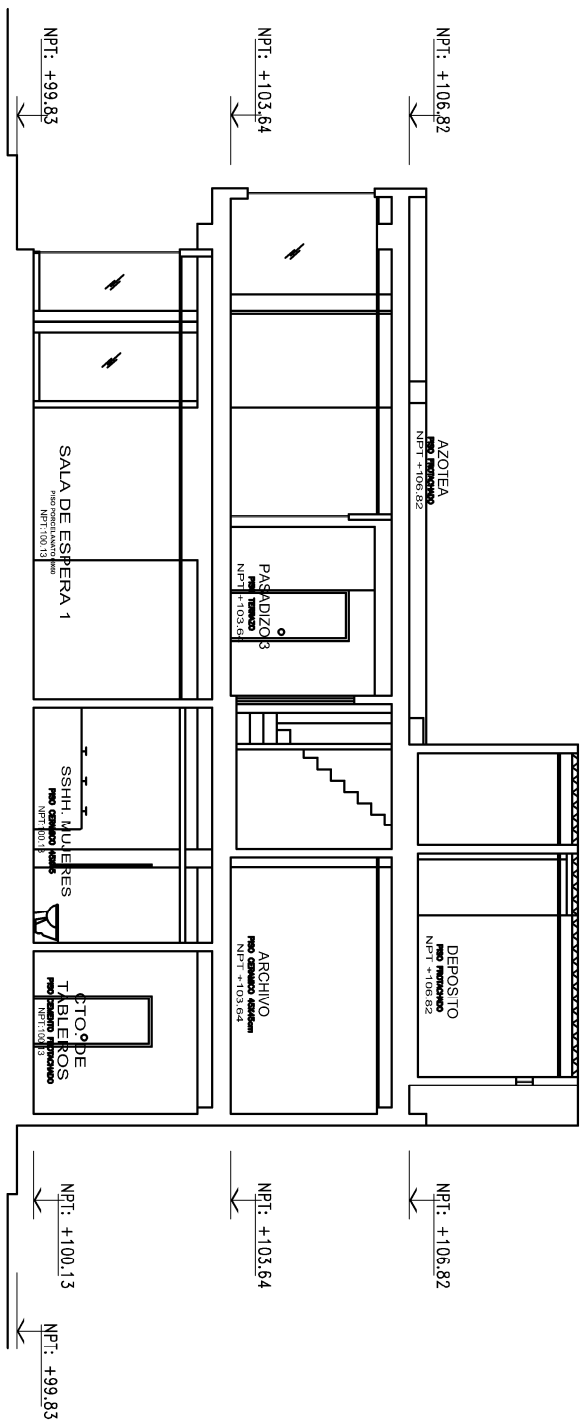


CORTE B-B
ESC 1:75

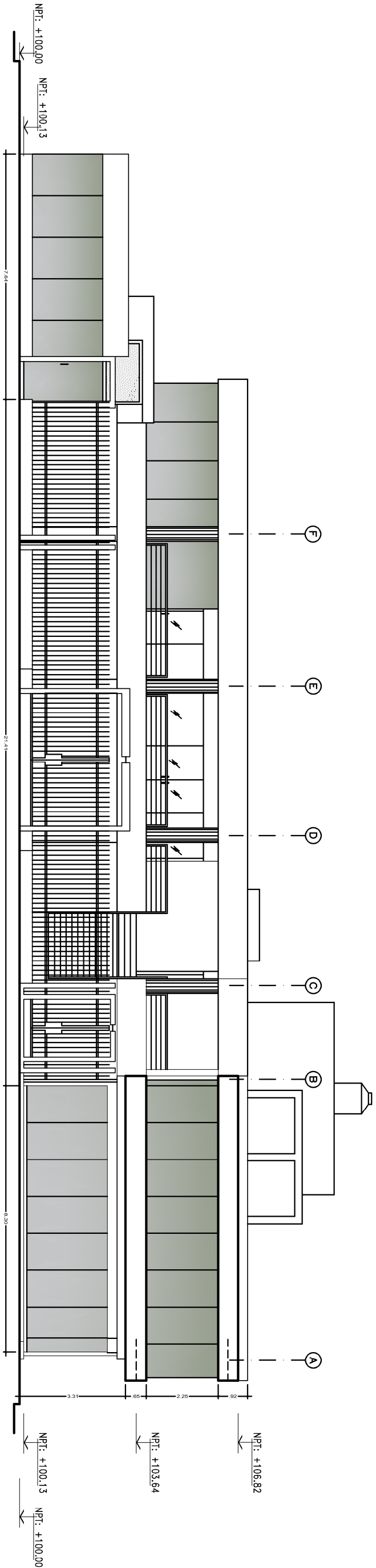
| | | | | | | | | | | | | | |
|--|--|--|--|-----------------|--|----------------------------------|--|---|--|----------------|--|----------------|--|
| <div><div><div></div></div><div>DERWALL NIEBO REGULAR</div></div> <div><div><div></div></div><div>DERWALL NIEBO CON LANA ACUSTICA</div></div> <div><div><div></div></div><div>DERWALL NIEBO SUPERBOARD</div></div> <div><div><div></div></div><div>MURO NIEBO</div></div> <div><div><div></div></div><div>MURO EXISTENTE</div></div> | | Observaciones: | | Entidad: | | Proyecto: | | Plano: | | Escala: | | Límite: | |
| Límite 1 | | ANTEPROYECTO 18/8 | | Límite 5 | | Límite 1 | | ELEVACIONES - CORTES | | 1/75 | | A-05 | |
| Límite 2 | | 3da modificación 21-Ago-01 / 4a entrega modificación 21-Ago-01 | | Límite 6 | | Proyecto: CENTRO DE ATENCION ICA | | Proyecto: ARO, RUTH E. JAUREGUI ALARCON | | Fecha: | | | |
| Límite 3 | | 3da modificación 21-Ago-01 / 4a entrega modificación 21-Ago-01 | | Límite 7 | | Especialidad: ARQUITECTURA | | Diseñado Por: R.J.A. | | AGOST 15 | | | |
| Límite 4 | | 3ra modificación 31-Ago-01 / 4a entrega modificación 31-Ago-01 | | Límite 8 | | | | | | | | | |



SECCION A-A
ESC 1:100

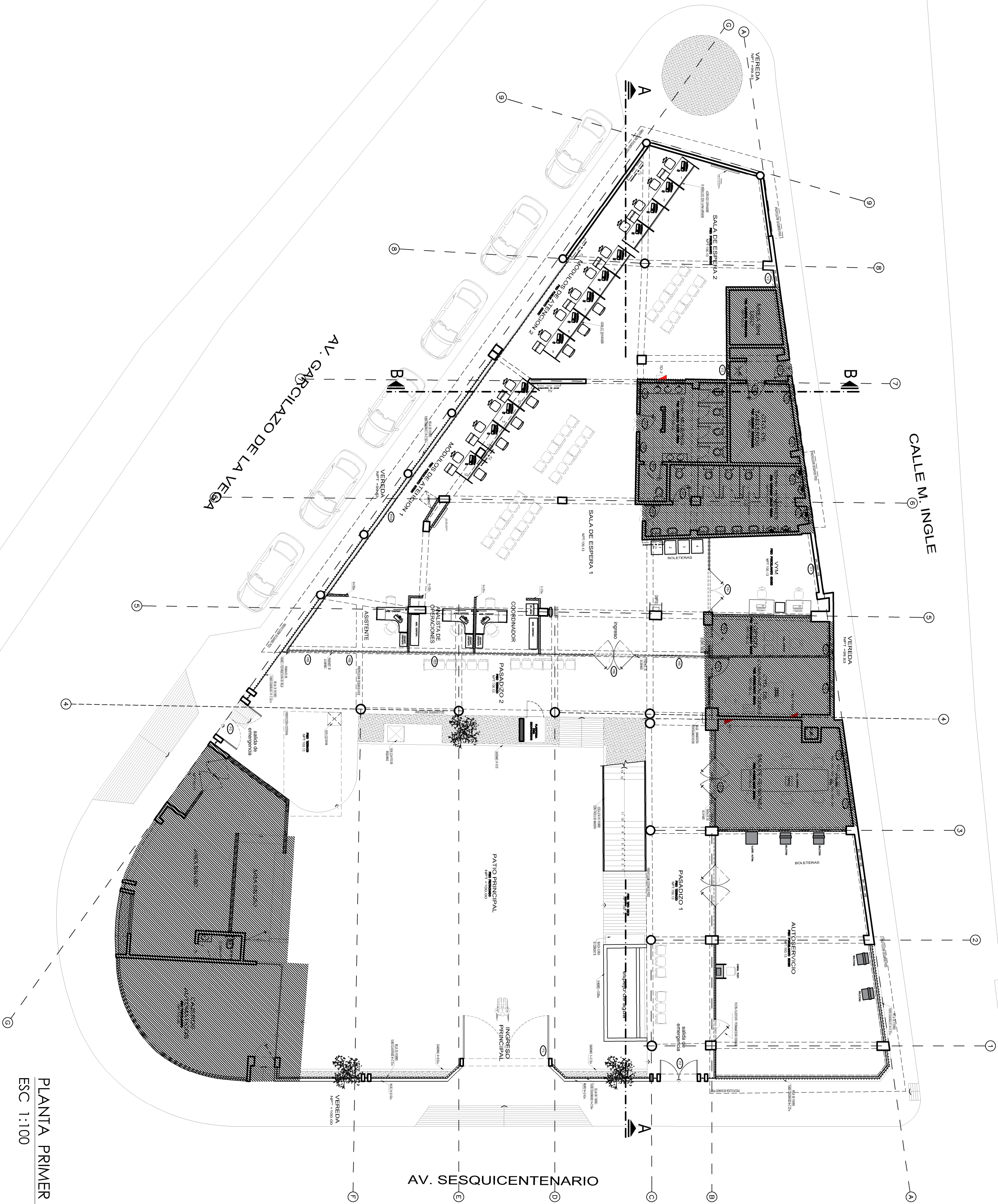


SECCION B-B
ESC 1:100



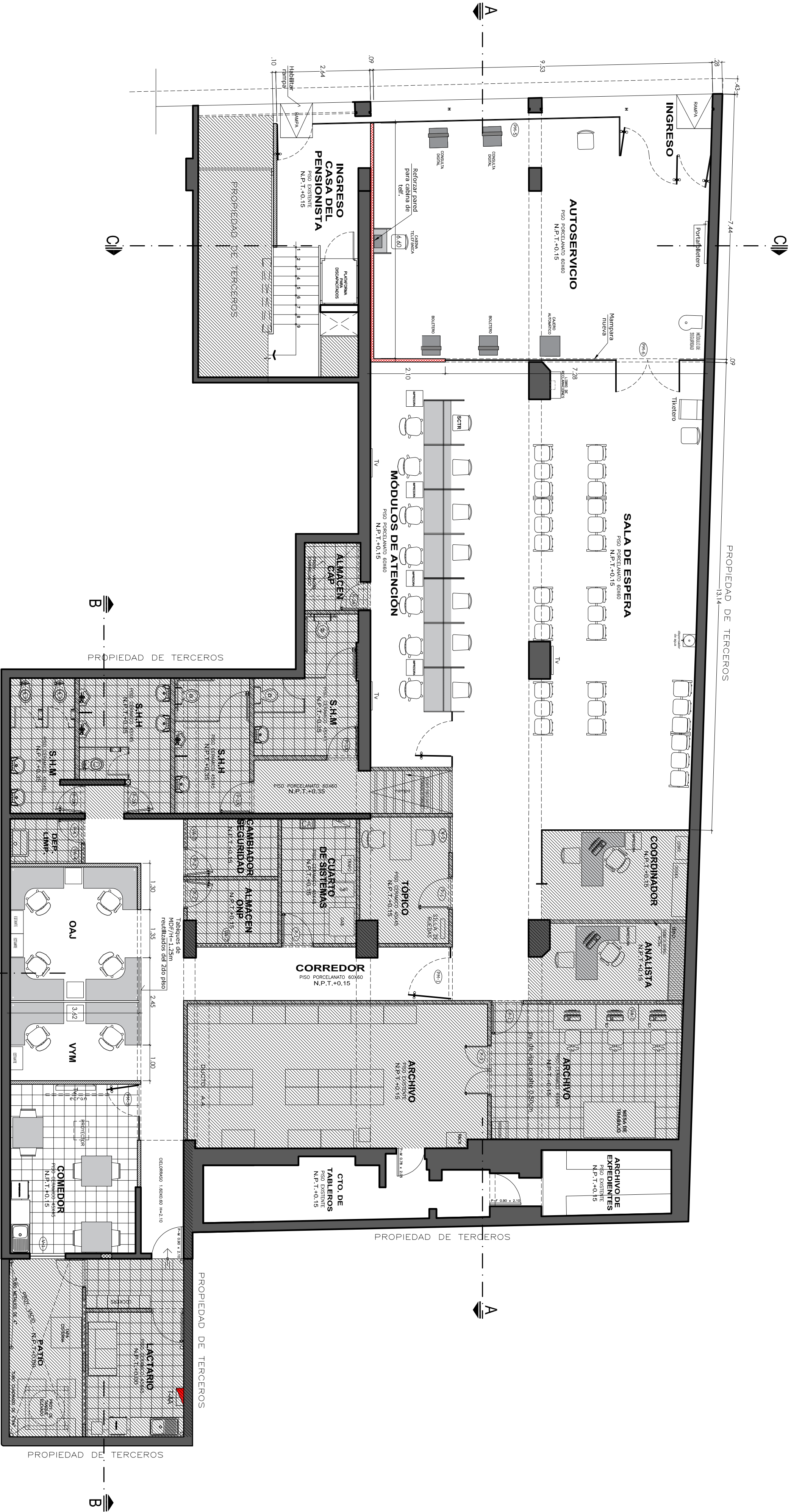
ELEVACIÓN PRINCIPAL
ESC 1:100

| | | | | | | | |
|---|--|----------------|----------|--|--------------------|-----------|---------|
| <div><div></div><div>MURO DE LADRILLO EXISTENTE</div></div> | | Observaciones: | Entidad: | Proyecto: NUEVO CENTRO DE ATENCION LAMBAYEQUE | Plano: | Escala: | Lámina: |
| <div><div></div><div>DRYVALL EXISTENTE</div></div> | | | | | CORTES Y ELEVACION | | |
| <div><div></div><div>DRYVALL MURO REGULAR</div></div> | | | | | Proyectorista: | | |
| <div><div></div><div>DRYVALL MURO RH</div></div> | | | | | ARQUITECTURA | | |
| | | | | | Desarrollo PY.: | | |
| | | | | | | 1/100 | A-02 |
| | | | | | | Fechto: | |
| | | | | | | MAYO 2020 | |
| | | | | | | | |



PLANTA PRIMER PISO
ESC 1:100

| | | | | |
|---------------|--|--------------|---------------------------------|------------|
| Entidad: | Proyecto: | Plano: | Escala: | Lámina: |
| | | | | |
| Especialidad: | REAPERTURA DEL CENTRO DE ATENCIÓN LAMBAYEQUE | DISTRIBUCIÓN | Proyectista: | Fecha: |
| | | | | |
| ARQUITECTURA | DESCARROLLO P.V.: | R.L.A. | ARQ. RUTH E. LAUREGUILI ALARCÓN | ENERO 2021 |
| | | | | |

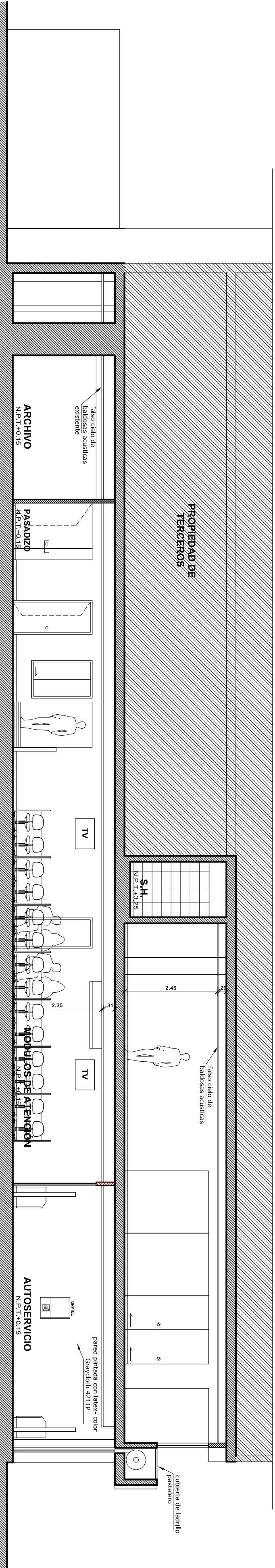


PLANTA PISO 1
ESC 1:75

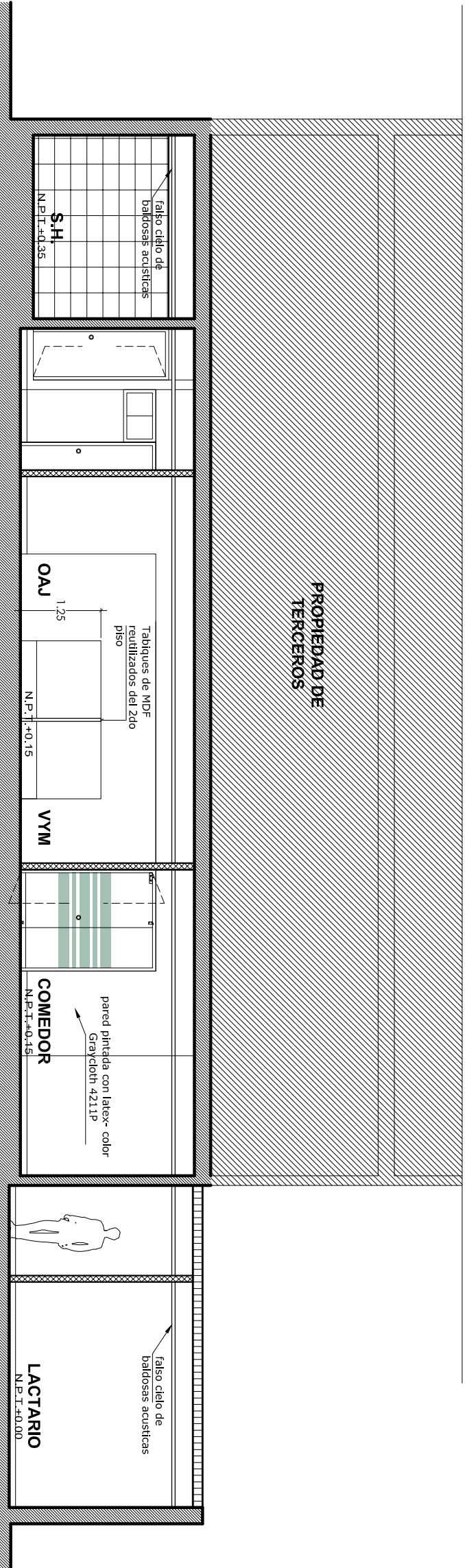
| CUADRO DE VANOS | | | | |
|-----------------------------|-------|------|-------|---|
| TIPO | ANCHO | ALF. | CANT. | CERRAJERIA / CONSIDERACIONES |
| PM-6 | 7.28 | 2.20 | 1 | VANO TIPOVADO 3MM TANQUES EN ACERO INOXIDABLE E ENTUBADO VINAL RESIN AFTER INSTITUCIONAL |
| MAMPARA EXISTENTE REUBICADA | | | | |
| TIPO | ANCHO | ALF. | CANT. | DESCRIPCION |
| PM-2 | 3.75 | 2.10 | 1 | VANO TIPOVADO 3MM SE REUBICARON LOS ACCESORIOS EXISTENTES |

| | | | | | |
|---|----------|--|-----------------------|----------------------------|-----------|
| <div><div></div><div>DE W/ALL NUEVO</div></div> <div><div></div><div>DE W/ALL EXISTENTE</div></div> <div><div></div><div>MURO EXISTENTE</div></div> | Entidad: | Proyecto: | Pono: | Escala: | Límite: |
| | | REAPERTURA DEL CENTRO DE ATENCIÓN PURA CA. LA LIBERAD 619, 627 - PURA | PLANTA CON MOBILIARIO | 1/75 | |
| | | Especialidad: | ARQUITECTURA | Proyectista: | FECH: |
| | | | | ARG. RUTH JAUREGUI ALARCON | ENERO2021 |
| | | | | Desarrollo Pr.: | |

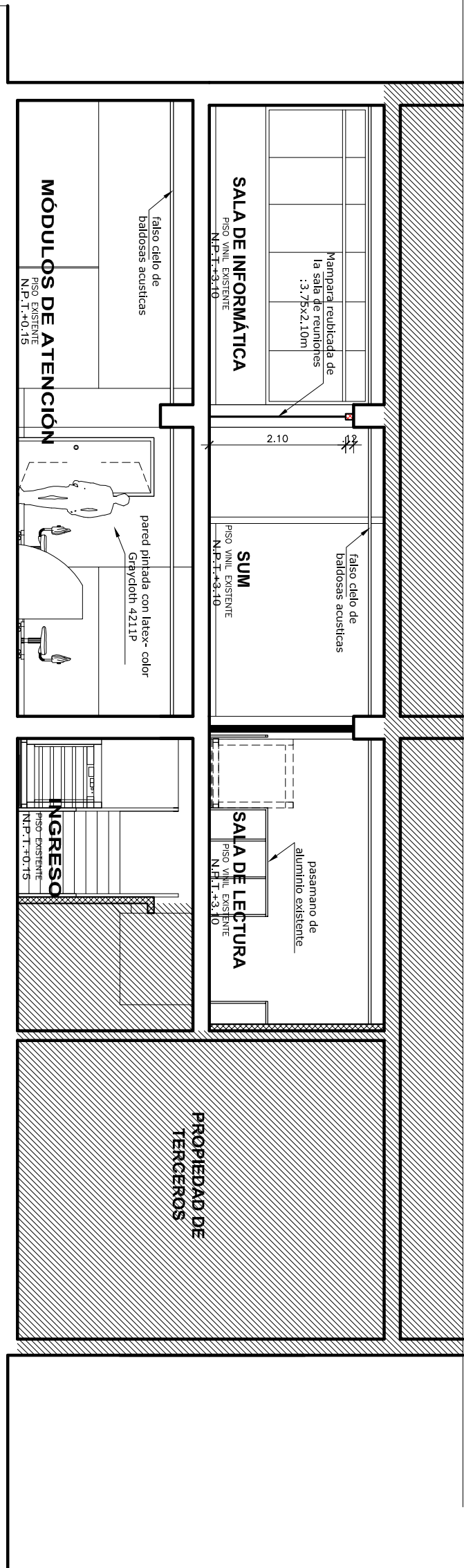
A-05



Corte A-A
ESC 1/100



Corte B-B
ESC 1/100

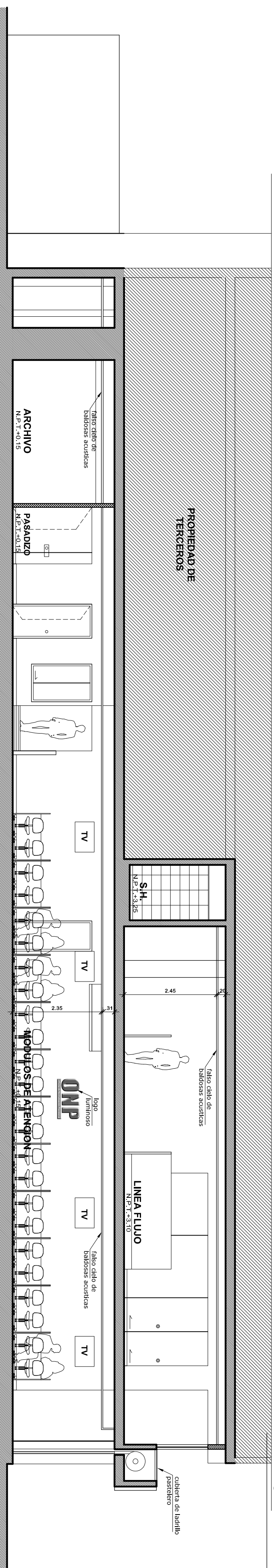


Cortec-C
ESC 1/100

| | | | | |
|---------------|--|-------------------|---------|-----------|
| Entidad: | Proyecto: | Pono: | Escala: | Ldmino: |
| | REAPERTURA DEL CENTRO DE ATENCION PURA | CORTE - ELEVACION | 1/75 | |
| | C.A. LA LIBERTAD 619 - 627 - PUNTA | Proyectista: | Fecha: | |
| Especialidad: | ARQUITECTURA | Desarrollo Pr.: | | |
| | | | | ENERO2021 |

A-07

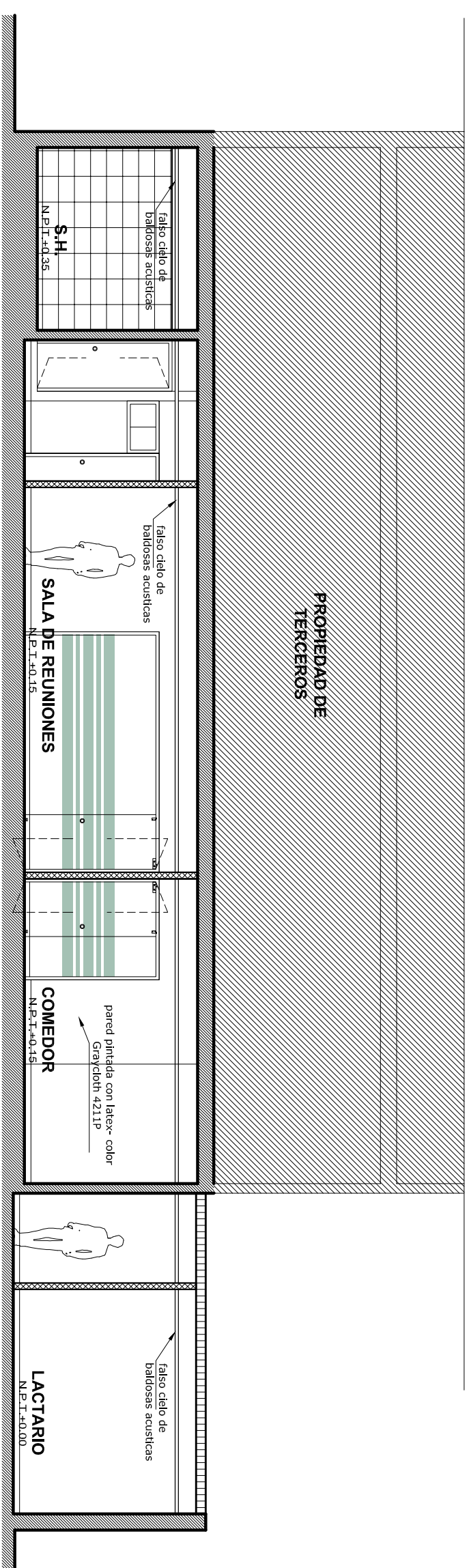
EXISTENTE



Corte A-A

ESC 1/100

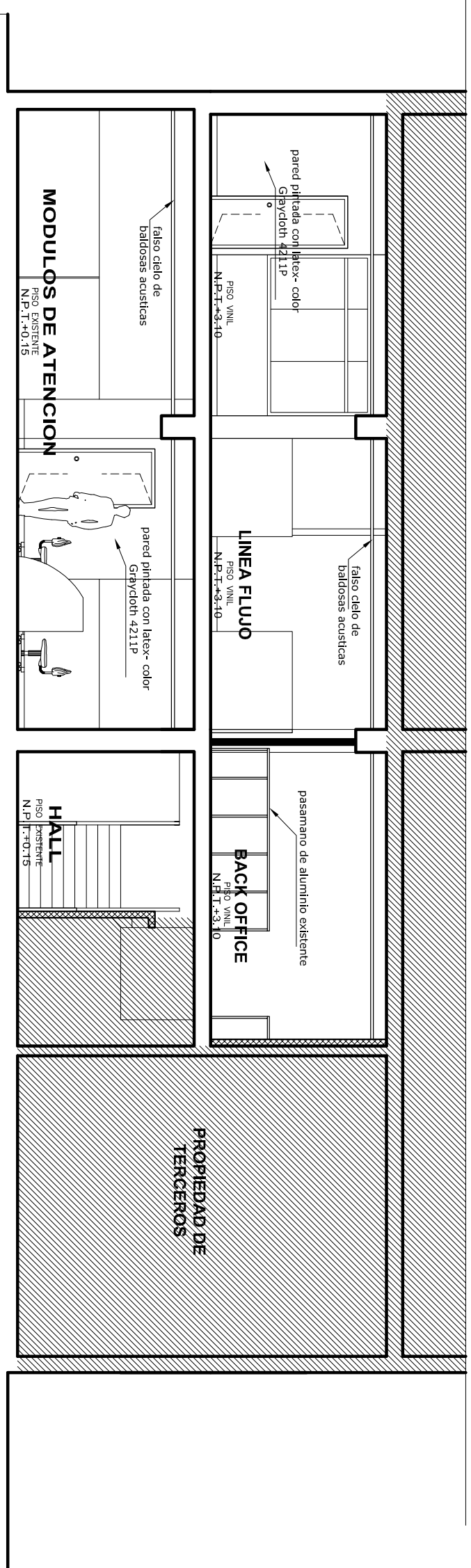
ESC 1/10



CorteB-B

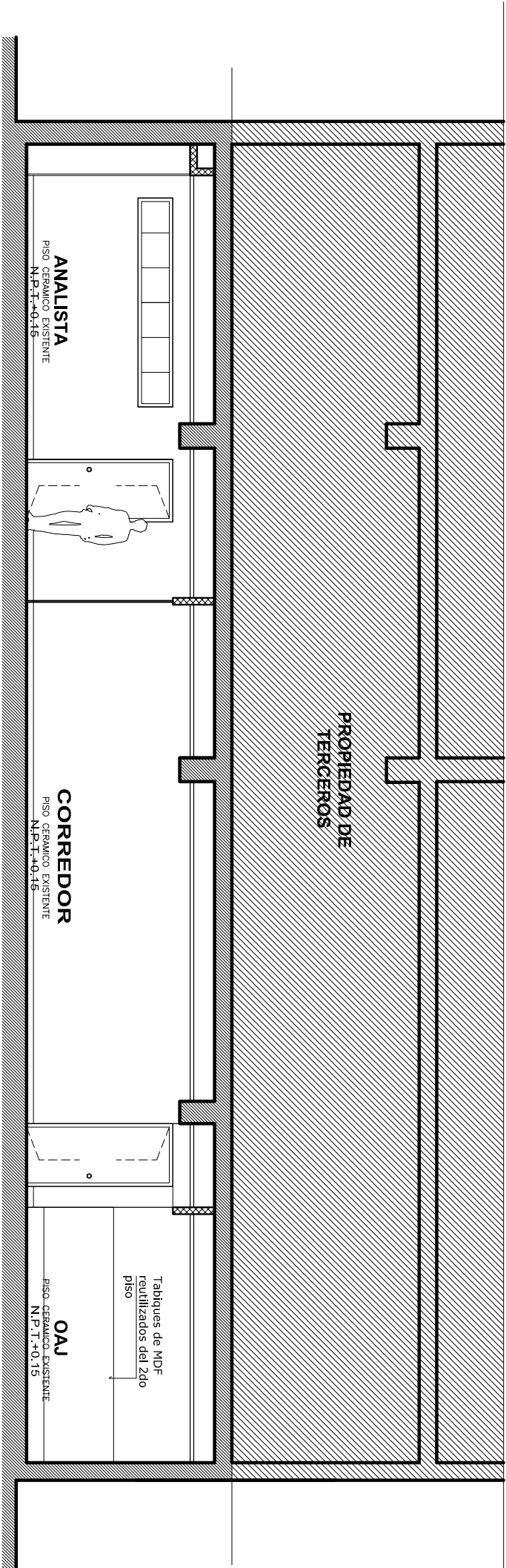
ESC 1/100

ESC 1/10C

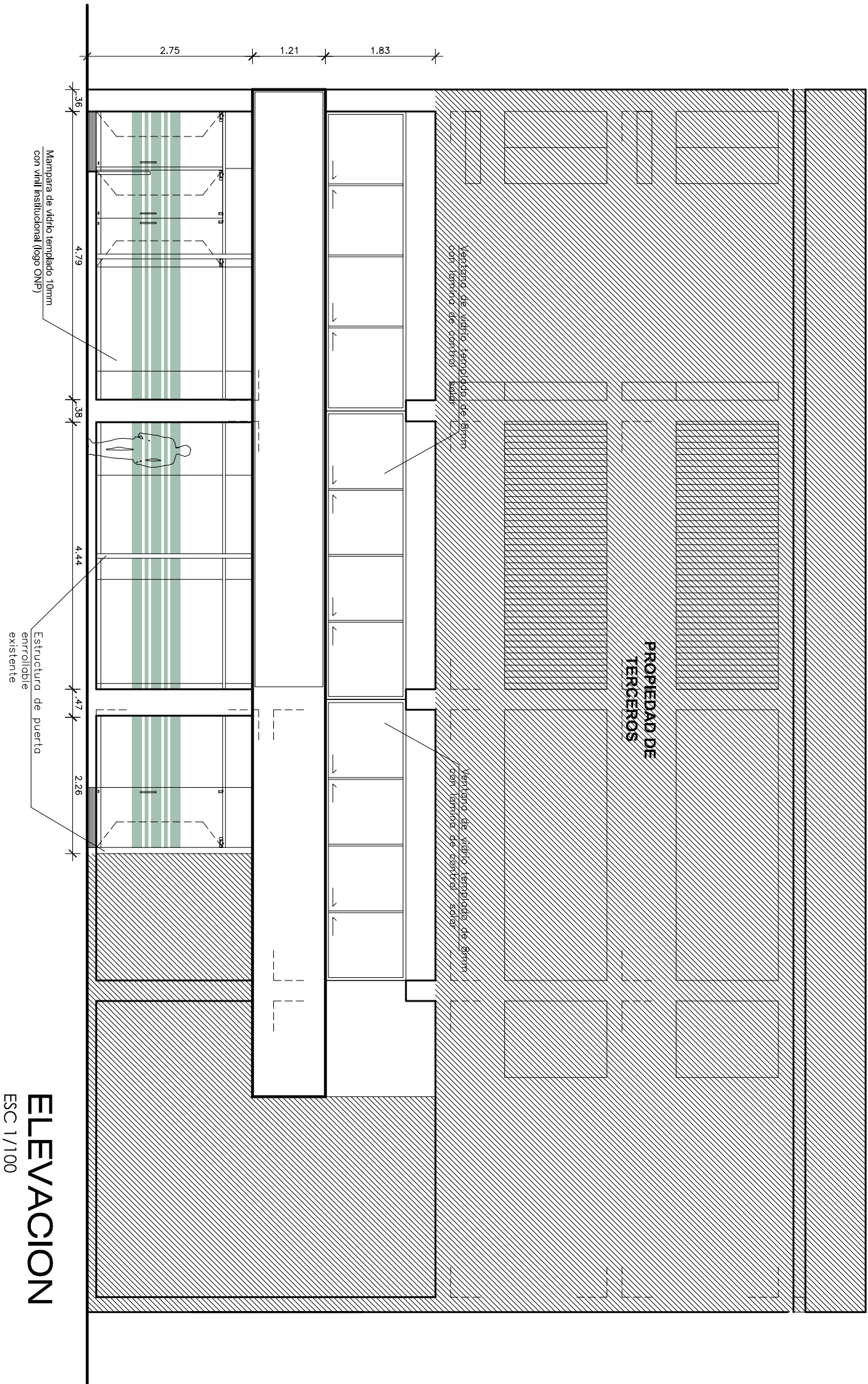
Cortec-C
ESC 1/100

ESC 1/10

| | | | | | |
|---|--|--|--|--|------------------------------------|
| <div><div><div><div><div></div><div></div><div></div><div></div></div><div><div></div><div></div><div></div><div></div></div></div><div><div><div>XXXXXXXX</div><div>XXXXXXXXXX</div><div>XXXXXXXXXX</div><div>XXXXXXXXXX</div></div><div><div>XXXXXXXXXX</div><div>XXXXXXXXXX</div><div>XXXXXXXXXX</div><div>XXXXXXXXXX</div></div></div><div><div>XXXXXXXXXX</div><div>XXXXXXXXXX</div><div>XXXXXXXXXX</div><div>XXXXXXXXXX</div></div></div><div>ORIGINAL NUEVO REGULAR</div><div>ORIGINAL NUEVO CON LAMA ACERICA</div><div>ORIGINAL NUEVO SANTIAGO</div><div>NUEVO NUEVO</div><div>MUÑO EXISTENTE</div></div> | | <div>Observaciones:</div> <div><div>Item 1</div><div>Se envia prefabrica O.D. para render - 27/06/16</div></div> <div><div>Item 2</div><div>Observaciones 1 - 04/07/16</div></div> <div><div>Item 3</div><div>Se envia observaciones 1 - 05/07/16</div></div> <div><div>Item 4</div><div>Se envia observaciones 1 - 07/07/16</div></div> | | | |
| <div>Entidad:</div> <div>Proyecto:</div> <div>CENTRO DE ATENCION PULPA</div> <div>C.A. LIBERTAD 819 527 - PULPA</div> | | <div>Plano:</div> <div>CORTE - ELEVACION</div> <div>Proyectista:</div> <div>ARQ. RUTH JAUREGUI ALARCON</div> <div>Especialidad:</div> <div>ARQUITECTURA</div> <div>Destacado Py:</div> <div></div> | | <div>Escala:</div> <div>1/75</div> <div>Fecha:</div> <div>JUNIO 2016</div> | <div>Lamina:</div> <div>A-03</div> |



Corte D-D
ESC 1/100



ELEVACION
ESC 1/100

| | | | | |
|---------------|--|-------------------|-----------|---------|
| Entidad: | Proyecto: | Promo: | Escala: | Límite: |
| | REAPERTURA DEL CENTRO DE ATENCION PURA | CORTE - ELEVACION | 1/75 | A-08 |
| | CA LA LIBERTAD 619-627 - PUNTA | Proyectista: | Fecha: | |
| Especialidad: | ARQUITECTURA | Desarrolló Pr.: | ENERO2021 | |